

■ Recherche et Développement

émetteur	B. Bruyère	date	23/07/01
Centre/Labo	CMI/CRI	tél.	03 21 63 57 32
		projet	
		fiche d'activité	20306
destinataires	: Art Coleman (J&L)		

subject SEM / EDX observation of a weld seam on a coated stainless steel.

Objective Determine if the phosphorus of the coating go into the welded seam (risk of contamination)

Results

Please, find enclosed in annex the weld observation by scanning electron microscopy with E.D.X. analyse.

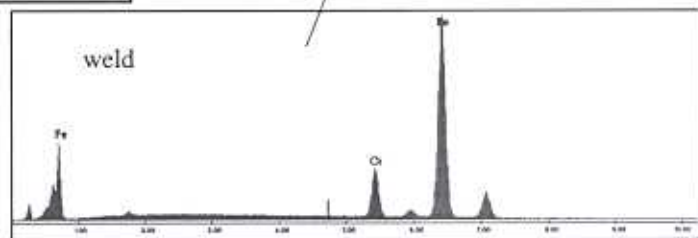
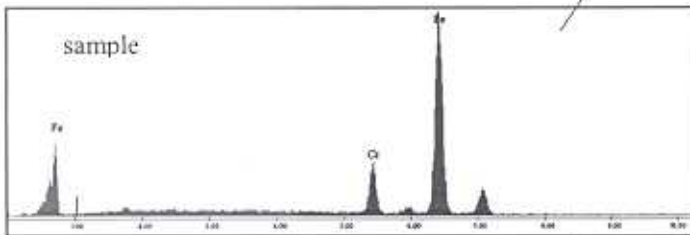
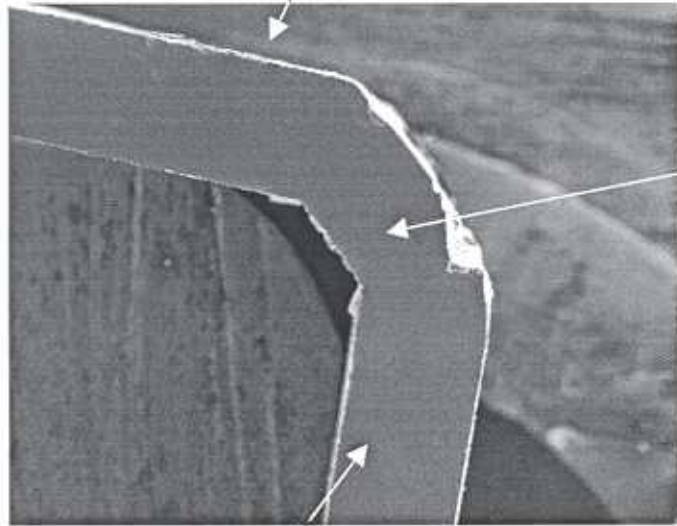
We observed no difference between the basic metal analysis and the welded seam analysis. No phosphorus is observed neither in the welded seam or in the base metal or coating.

The coating composition is Si and O with a few of Cr, Mn, Cu and Al. The K and Na may proceed from dust. Maybe, the phosphorus concentration is inferior to the E.D.X. detection possibility.

On base of these analysis, we expect no risk of contamination.

<i>Participant(s) à l'étude</i>	<i>Valideur</i>	<i>Chef de Projet</i>
	F. Chassagne	P.O. Santacreu

coating



E.D.X. analyse